

RECRUITMENT

Associate Research Fellow Level A

National Centre for Farmer
Health (School of Medicine)

CONTACT

Alison Kennedy
Acting Director, National Centre for Farmer Health (School of Medicine)
5551 8533
Alison.kennedy@deakin.edu.au



**DEAKIN
UNIVERSITY**

About Deakin

Deakin's growing reputation is reflected in its rapid rise in international rankings; Deakin entered the prestigious Academic Ranking of World Universities for the first time in 2014 and now ranks an estimated 262 (ARWU 2020). Deakin is ranked 29 in the QS ranking of the world's top universities under 50 years.

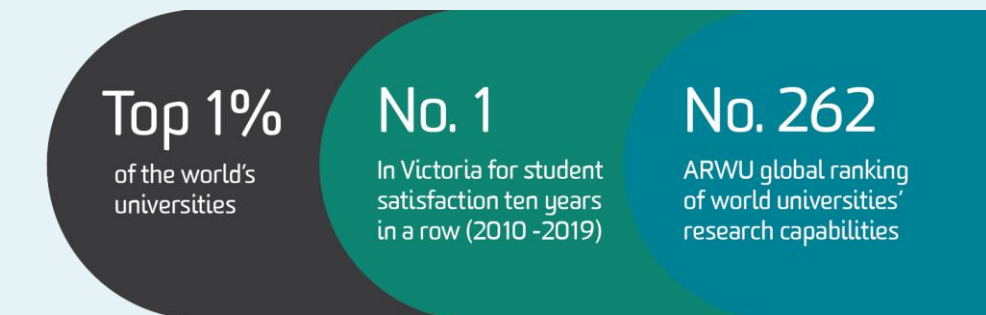
Established in 1974, Deakin University was named after the leader of the Australian Federation movement and the nation's second Prime Minister, Alfred Deakin.

Deakin University has five campuses, one in Melbourne's eastern suburbs, two in the port city of Geelong, one in Warrnambool on the south-west coast of Victoria, and more than 15,000 students study predominantly online as part of Deakin's Cloud Campus.

All students, regardless of their campus or mode of study, benefit from Deakin's award-winning digital environment.

Deakin is proud of its inclusive and student-focused culture and its reputation for using innovative digital solutions to provide an engaging and personalised learning experience. Deakin is committed to lifelong learning, providing students with choices about how, when and where learning occurs.

Deakin prides itself on developing career-ready graduates who are innovative, resilient, and well prepared for rapidly changing workforce needs. Deakin has a strong focus on teaching, with student satisfaction and the employability of its students being key indicators of success. Deakin ranks first in Victoria for student satisfaction (SES) and graduate employability (GOS).



Deakin's four faculties offer courses across the arts, design, science, sport, nutrition, architecture, business, law, medicine, optometry, engineering, nursing, allied health, psychology and teaching.

With over 60 000 students Deakin is one of Australia's largest universities and is consistently ranked in the top 1% of the world's universities.

As an Australian university with global impact, Deakin is translating its research into the commercial outcomes that will drive the innovation Australia's economy needs now and into the future. Research at Deakin focusses on innovation and robust partnerships with industry and business, and it is building a formidable international reputation in areas of emerging national social, economic and political priority in its core areas of health, sport, carbon fibre, energy and cyber security. Deakin's manufacturing innovation precinct provides an important link between technological innovation and successful industry outcomes, strengthening and streamlining pathways for commercial research.

Our strategy

Through the strategic plan Deakin 2030: Ideas to Impact, Deakin's ambition is innovation and excellence in both education and research generate ideas that transform lives and communities. We will be Australia's most progressive and responsive university, leading in blending digital capability with our distinctive campus precincts. We will leverage strong partnerships to maximise the social, cultural and economic impact we deliver regionally, nationally and globally.

- We excel in both education and research.
- We value both excellence and equity.
- We are leaders in digital capability
- We are agile and responsive to community need.
- Indigenous Knowledges and Ideas form our future.
- We deliver impact locally and globally.
- We seek to grow where growth aligns with strategy.



Faculty of Health

Deakin Health is recognised in Australia and internationally for its teaching, training, research and service. We are one of the fastest growing health faculties in Australia. Our teaching, research and service contribute to improved health and wellbeing, and to strengthening the health and human services sectors in Australia and the Asia-Pacific. We assist governments, communities and organisations to develop a wide variety of health and social programs and policies.

The Faculty of Health teaches a large variety of health disciplines and sub-disciplines at campuses and health services in Geelong, Burwood, Ballarat, Warrnambool and other locations in Melbourne, Western Victoria and further afield. Our courses are delivered both on campus and online via our Cloud Campus using a state-of-the-art blend of face-to-face and online teaching methods.

The Faculty is made up of five schools:

- School of Exercise and Nutrition Sciences
- School of Health and Social Development
- School of Medicine
- School of Nursing and Midwifery
- School of Psychology

Through our Schools and research groups, we work collaboratively with a wide range of external organisations. These include federal and state governments, schools, public and private hospitals, health centres, non-government organisations such as Diabetes Australia, community groups, international bodies such as the World Health Organization, commercial companies, and other universities and research institutes at home and overseas. A number of highly productive partnerships across the sector include joint appointments at professorial level.

We also work collaboratively with a wide range of Indigenous partners both internally and externally. Partners include not-for-profit and professional association groups supporting Aboriginal and Torres Strait Islander staff, students and its communities.

Deakin Health is guided by a strong and vibrant commitment to improving the health and wellbeing of all people in Australia and our surrounding region. Please join us in this important work.

Our Mission

The Faculty of Health strives to achieve Deakin's vision by:

1. Inspiring our students to realise their potential, develop their knowledge and skills, and grow as individuals who excel in the workplace, contribute to their communities and engage in lifelong learning
2. Providing learning experiences that are personal, dynamic and contemporary, with clearly articulated expectations and standards
3. Undertaking world-class research to support evidence-based policy and practice and provide a stimulating research training environment

Engaging our students, alumni, staff, partners and friends to participate fully in the life of the Faculty and University and to become global citizens.

Deakin's promise to equity, diversity and inclusion

At Deakin we value diversity, embrace difference and nurture a connected, safe and respectful community. We recognise that our academic workforce is increasingly diverse with a variety of backgrounds, experiences and responsibilities. In many cases, academic careers can be put on hold through career breaks or part-time work arrangements to take on caring duties, gain experience in other industries, for medical reasons or other personal circumstances. Achievement relative to opportunity places more emphasis on the quality as opposed to the quantity of research outputs. In your application, we encourage you to comment on your achievements relative to opportunity.



School of Medicine

Statement of purpose:
To enhance the communities we serve through outstanding clinical training and research.

Aspiration:
To address the workforce needs and advance the health and well-being of regional, rural, remote, Indigenous and marginalised individuals and communities.

Values:
We foster a culture of diversity, inclusiveness, respect and social accountability, with a focus on excellence, innovation and work readiness.

We accepted our first medical students in 2008 to our postgraduate medical degree, and our graduating interns have already established strong links with regional and rural hospitals, together with the Melbourne city hospitals. The Doctor of Medicine (MD) degree is a 4 year course, with first 2 years based at the University campus in Waurin Ponds, followed by 2 years of clinical education and experience in one of our clinical schools.

The School has also developed other new undergraduate and postgraduate programs, namely Optometry, Medical Imaging, Agricultural Health and Medicine, Units in the Bachelor of Biomedical Science and Health Science Majors, Bachelor of Health and Medical Science Honours, MBA (Healthcare Management), Graduate Certificate of Hospital Administration, and a Masters Degree in Surgical Research. The School has a significant number of M Phil (Masters by Research) and PhD students in both basic sciences and clinical research. Our research capability and performance has grown rapidly. This involves academic staff at the Waurin Ponds campus and those working in primary and secondary care throughout the region.

The school's strategic priorities emphasise its commitment to the improved wellbeing of Indigenous Australians through high quality education, increased clinical training opportunities in Indigenous Health and increased cultural safety.

The school has also developed the Indigenous Entry Streams across its three major courses with a subsequent increase in students applying to study at Deakin. The school has formalised relationships with Aboriginal Health services in the region to increase the school's capacity to deliver Indigenous Health Curriculum, and grow its research aspirations.

The School has four research "pillars": Infection, Immunity and Cancer; Neurosciences; Metabolic/Musculoskeletal medicine; and Rural Health research. School staff participate in the Institute for Mental and Physical Health and Clinical Translation (iMPACT) and work with our community partners to achieve world-class results.

- Our Research Centres and partners include:
- Metabolic Research Unit (MRU)
- Centre for Rural Emergency Medicine
- Geelong Centre for Emerging Infectious Diseases
- National Centre for Farmer Health
- Epworth Hospital Geelong
- St John of God Hospital Geelong
- University Hospital Geelong
- CSIRO Australian Animal Health Laboratory
- The Western Alliance Academic Health Science Centre
- The Kardinia Health GP Superclinic

As a School we are committed to providing excellent education, research facilities and services for students and staff. We look forward to welcoming you to the School of Medicine.



National Centre for Farmer Health

The NCFH is a research, service delivery and education centre that provides national leadership to improve the health, wellbeing and safety of farm men and women, farm workers, their families and communities across Australia and internationally. The Centre is a partnership between Western District Health Service and Deakin University and is based in Hamilton, Victoria.

The vision of the National Centre for Farmer Health is 'Making a difference to farmers' lives. The NCFH achieves this through inspiring quality education, research and service delivery through innovative partnerships that advance agrihealth locally and globally. Focusing on prevention and early identification of risk factors associated with farming populations, the National Centre for Farmer Health (NCFH) develops timely, appropriate, effective and popular interventions. The vision of the NCFH is exemplified by five key pillars:

1. Education and Training: Teach and learn from the rural community
2. Research and Innovation: Facilitate research that makes a difference to farmers' lives
3. Reputation and Reach: Recognised for excellence, nationally and internationally
4. Business Development: Maximise our endeavours to provide value
5. Governance: Committed to working with stakeholders to grow NCFH

Associate Research Fellow Level A

Research only Level A

The National Centre for Farmer Health at Deakin University is seeking to appoint an **Associate Research Fellow Level A** to support the design and implementation of an evaluation of resilience initiatives across rural Victoria.

The incumbent will be based at the National Centre for Farmer Health, which is co-located at the Western District Health Service in Hamilton, Victoria.

A flexible, combined model of working from home and on site can be negotiated. Working from home may be required at times due to the covid-19 pandemic.

This is a new fixed-term position.

Level A members of staff typically perform these duties at the following levels:

Research and scholarship

- Supporting and assisting with research, scholarship or creative activity
- Supporting and assisting with research projects and collaborations
- Supporting and assisting with research collaborations and partnerships
- Supporting and assisting with research programs or partnerships
- Supporting and assisting with honours supervision
- Developing an early career research plan.

Performance expectations

Annual performance objectives and expected outcomes will be defined for this role in accordance with the Minimum Standards and Typical Duties for Academic Levels (MSTDALs) and Faculty Research Expectation Models (FREM). Specific duties will be allocated with reference to the applicable Workload Allocation Model (WAM). These documents are updated from time to time and are available on request.



Selection criteria

Position Context

The National Centre for Farmer Health is an innovative hub for research, service delivery and education furthering the health, wellbeing and safety of farmers, farm workers, farming families and farming communities. The Associate Research Fellow works within a multidisciplinary team including professionals from the health, agricultural, social sciences and information technology disciplines who have a proven capacity to deliver in the areas of education training, applied research and community engagement.

The appointee will be expected to:

- provide an excellent contribution to the Faculty's research programs
- exhibit and/or publish high quality research in journals of high repute
- contribute to the achievement of Deakin's and the National Centre for Farmer Health's strategic goals in research, engagement and innovation
- contribute to the research achievement of the Faculty
- undertake professional and administrative roles and responsibilities that enhance the discipline and Deakin
- develop relationships with research, community, industry and government for enhanced research outcomes.

Selection Criteria

– Essential

- PhD in a relevant discipline (e.g., health, mental health, agriculture) and/or other relevant qualifications and experience
- emerging research and scholarship through publications, and/or exhibitions as appropriate to the discipline
- ability to make a contribution to the health, wellbeing and safety of rural communities through research and research translation
- capacity to contribute to research and administration
- excellent interpersonal skills and a proven ability to establish good working relationships with colleagues and external stakeholders (e.g., funders, community, industry and government)
- Proven capability to work positively and effectively as part of a collaborative and interdisciplinary work team, to accommodate and work well with different working styles and to work independently where required
- Demonstrated communication and interpersonal skills with the ability to produce clear and accurate communications and presentations that are appropriate for their intended audience
- Demonstrated ability to organise and plan, and to meet rigid and conflicting demands and deadlines, along with the ability to adapt to changed priorities
- Exceptional record keeping skills and attention to detail, and demonstrated administrative skills including proficient use of Microsoft Office products.

Selection Criteria

– Desirable

- Knowledge and understanding of life and work in a rural farming community
- Demonstrated organisational and project management skills, including the ability to work in diverse and complex environments in a multi-disciplinary team with limited supervision
- knowledge, understanding and appreciation of Aboriginal and Torres Strait Islander cultures and contemporary issues
- Track record with scientific writing, preferably with scientific publication(s).



Appointment process and how to apply

Application

Thank you for your interest in the position of Associate Research Fellow.

Please direct all correspondence and enquiries to:

Dr Alison Kennedy
Acting Director, National Centre for
Farmer Health (School of Medicine)
5551 8533
Alison.kennedy@deakin.edu.au

How to apply

Please apply online via:

[deakin.edu.au/about-deakin/
work-at-deakin](https://deakin.edu.au/about-deakin/work-at-deakin)

Include cover letter, curriculum vitae
and a response to the Selection
Criteria.

Please quote reference number:
514358

Interview process

An initial screening of prospective
candidates will take place.

Short-listed candidates will be
interviewed by a panel of esteemed
colleagues.

Details of professional referees will be
required prior to interview.

Remuneration and benefits

An attractive remuneration package is
offered. Salary will be commensurate
with qualifications, experience and
research record.

Relocation support may also be
available.

Term of appointment

Appointment is 0.6FTE and fixed term
until 31/12/21. This position is subject
to an initial probationary period.

Special Requirement/s

This role has been identified as having
contact with children and requires the
incumbent to apply for and maintain a
Working With Children Check (refer to
Deakin's Recruitment Procedure for
further details).

A police check is required for this
position.



Our locations

Deakin has five campuses, one in **Burwood**, two in Geelong (**Waterfront** and **Waurm Ponds**), one in **Warrnambool** and the vibrant Cloud Campus through which 20% of our students study.

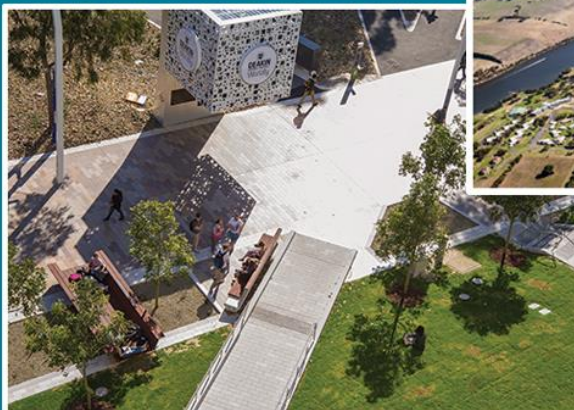
Further information regarding our locations and relocating to Victoria can be found here:

[Our locations](#)

[Considering Relocation](#)

[Melbourne timelapse](#)

[Geelong/SurfCoast timelapse](#)



Flexible location

Deakin understands that flexibility is a key driver of employee engagement and is committed to flexible working arrangements for our staff. This position can be based at any of the Deakin University campuses – Burwood, Waterfront, Waurm Ponds or Warrnambool