



Climate Change Adaptation – A framework for local action

Rosie Rowe

Western District Health Service

Southern Grampians & Glenelg PCP

NCFH Conference Oct 2010

Communities that are resilient to change



Climate Variability

Has direct and indirect impacts on health

Impacts those most vulnerable to change

Assisting people to adapt makes good sense – for health et al



The McCaughey Centre

VicHealth Centre for the Promotion of Mental Health and Community Wellbeing

Policy Signpost #3

Climate Change
Adaptation:
A Framework
for Local Action

Southern Grampians and Glenelg
Primary Care Partnership

Rosie Rowe and
Anita Thomas



www.sggpcp.com

Direct Health Impacts



- Disease vectors & water borne illness
- Illness/death - heat related/respiratory
- Extreme weather

DoH (Climate Change & Health 2007)

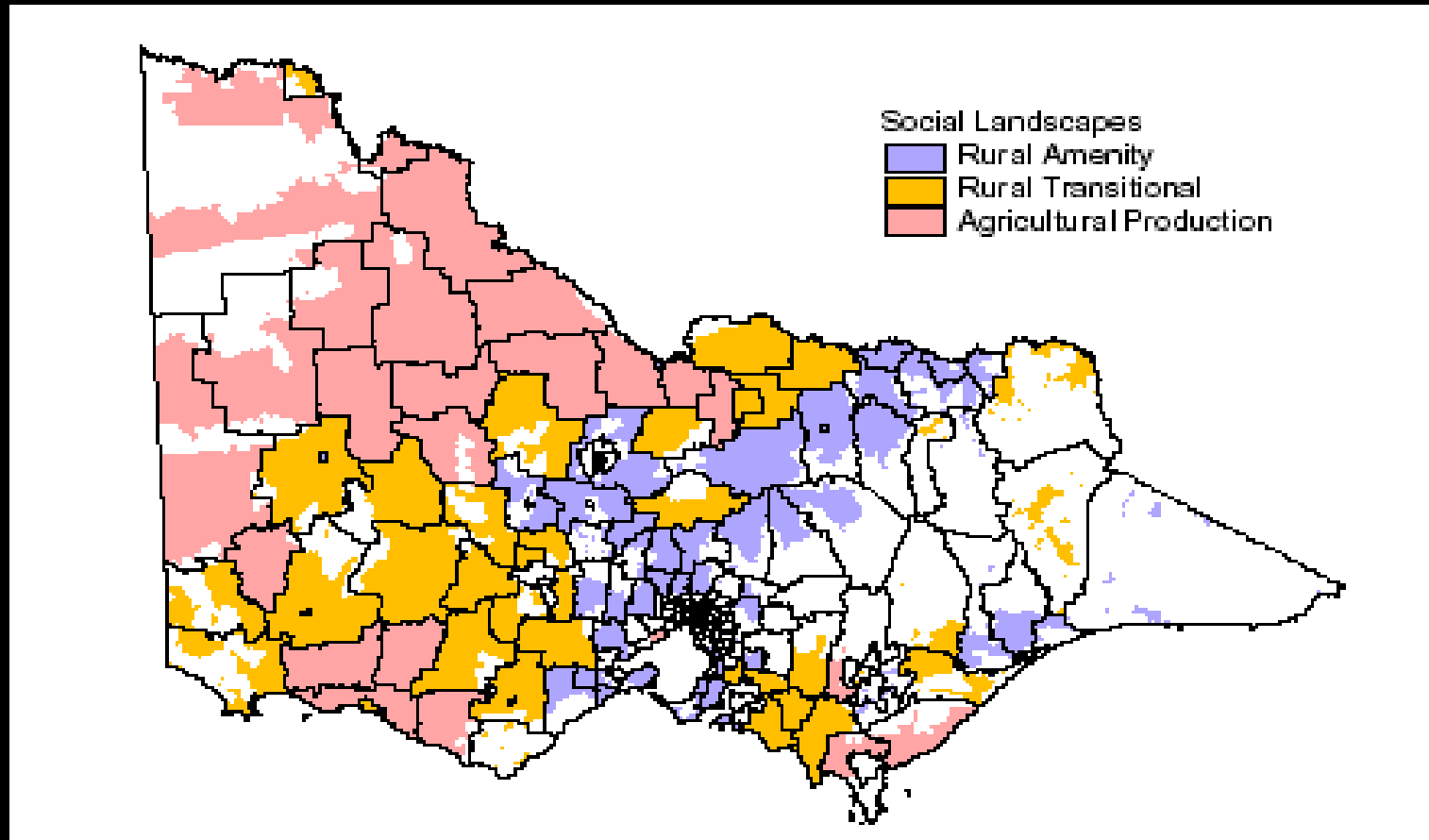
Indirect Health Impacts



- Increased prices essential services (energy/food/water/transport)
- Increased stress & uncertainty – mental health
- Reduced social connection

VCOSS (2007), PCP (2008), Rural Women's Network (2009)

Local Impacts – social/demographic landscapes

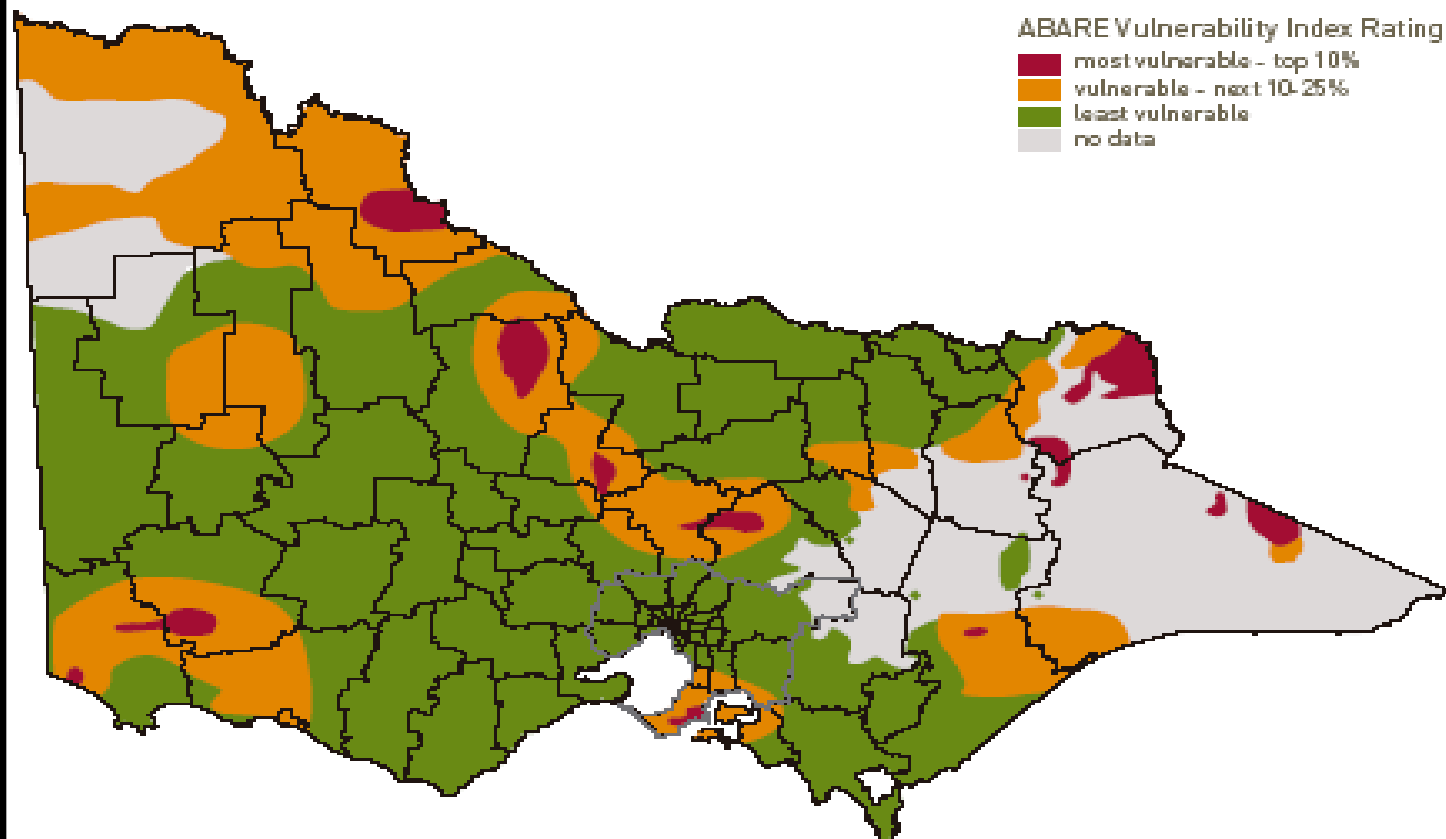


Source: Barr, 2005

Local Impacts – vulnerability to rural adjustment

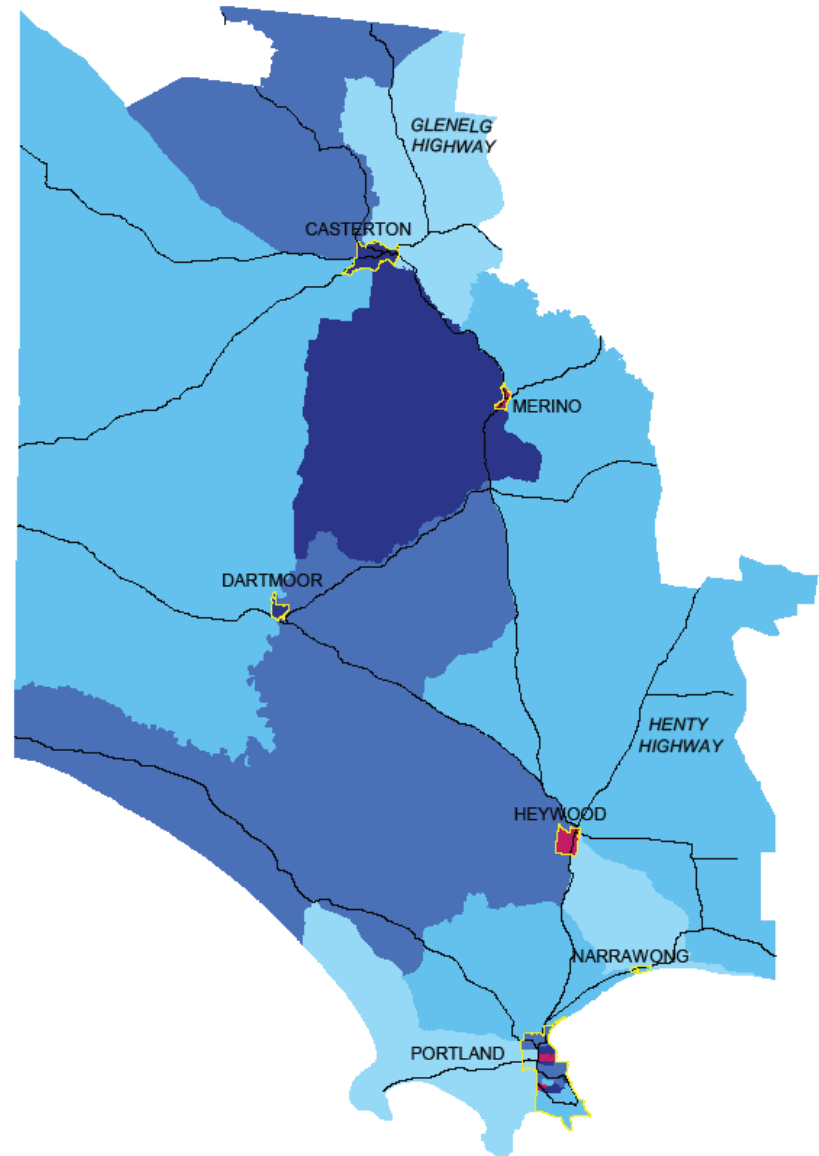
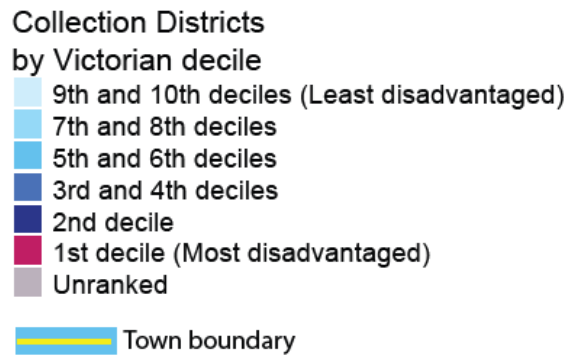
Level of community vulnerability in the face of structural adjustment¹

Agricultural regions of Victoria



Source: ABARE, 2005

Glenelg Shire, SEIFA Index of Relative Socio-economic Disadvantage, 2006



Source: 2008, ABS, Cat no. 2033.0.55.001 Socio-economic Indexes for Areas (SEIFA), Data only, 2006; DPCD, 2008, Towns in Time



Who's most Vulnerable

those with least ability to adapt

Low SES – few resources

Some Farm Families & others – climate reliance

Some with Existing conditions – chronic disease

Actions

– Ottawa Charter for Health Promotion

Issue	Interventions
Household energy	insulation
Household water	water tanks, drought gardening
Affordable food supply	competition in food retailers; local food production
Transport	active transport, public sector
Community resilience	telecommunications access, economic resources, childcare, access to counseling.....

= adaptation makes good sense at any time

Actions –



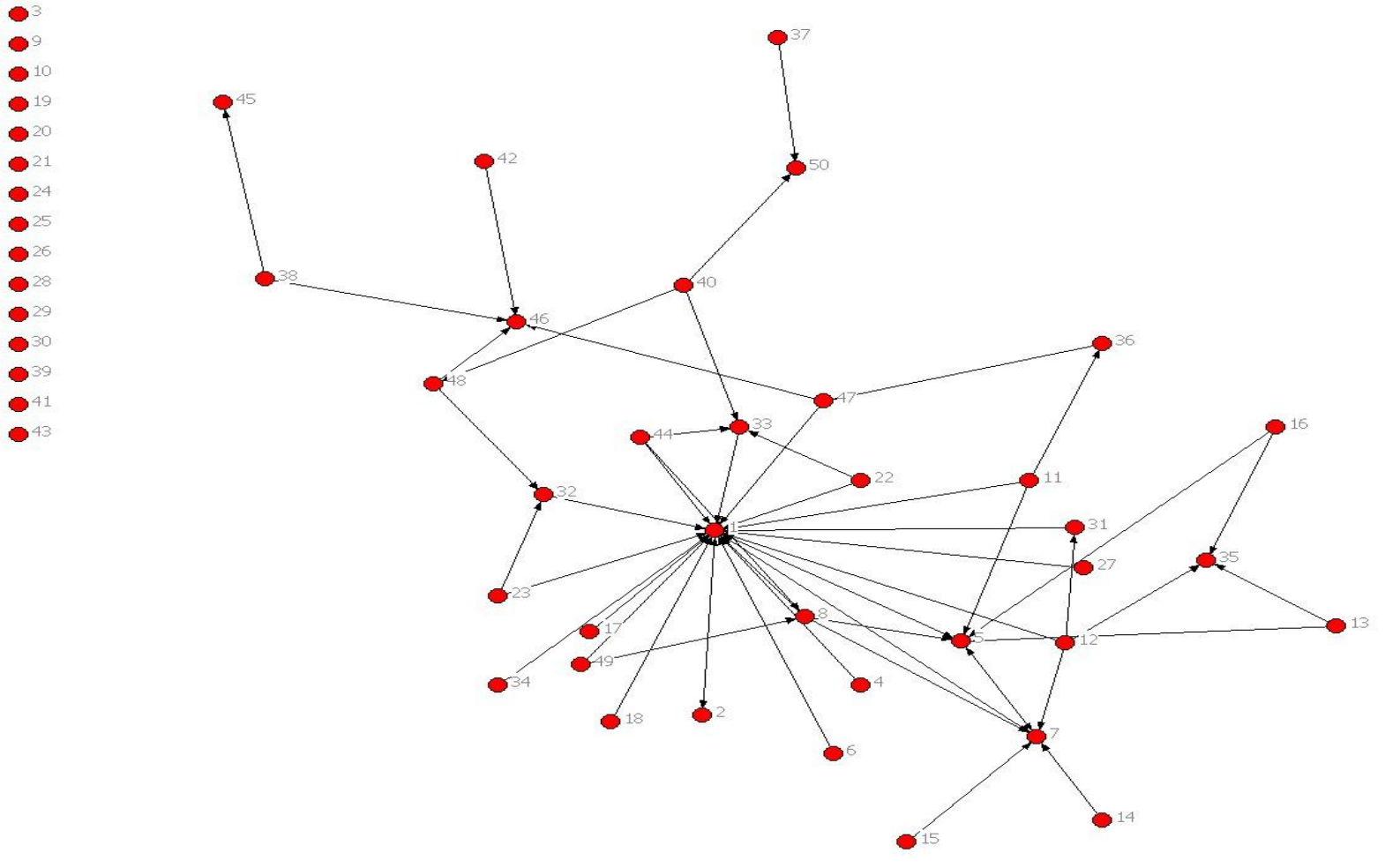
Farm Families

Access to services – eg. Farm Gate

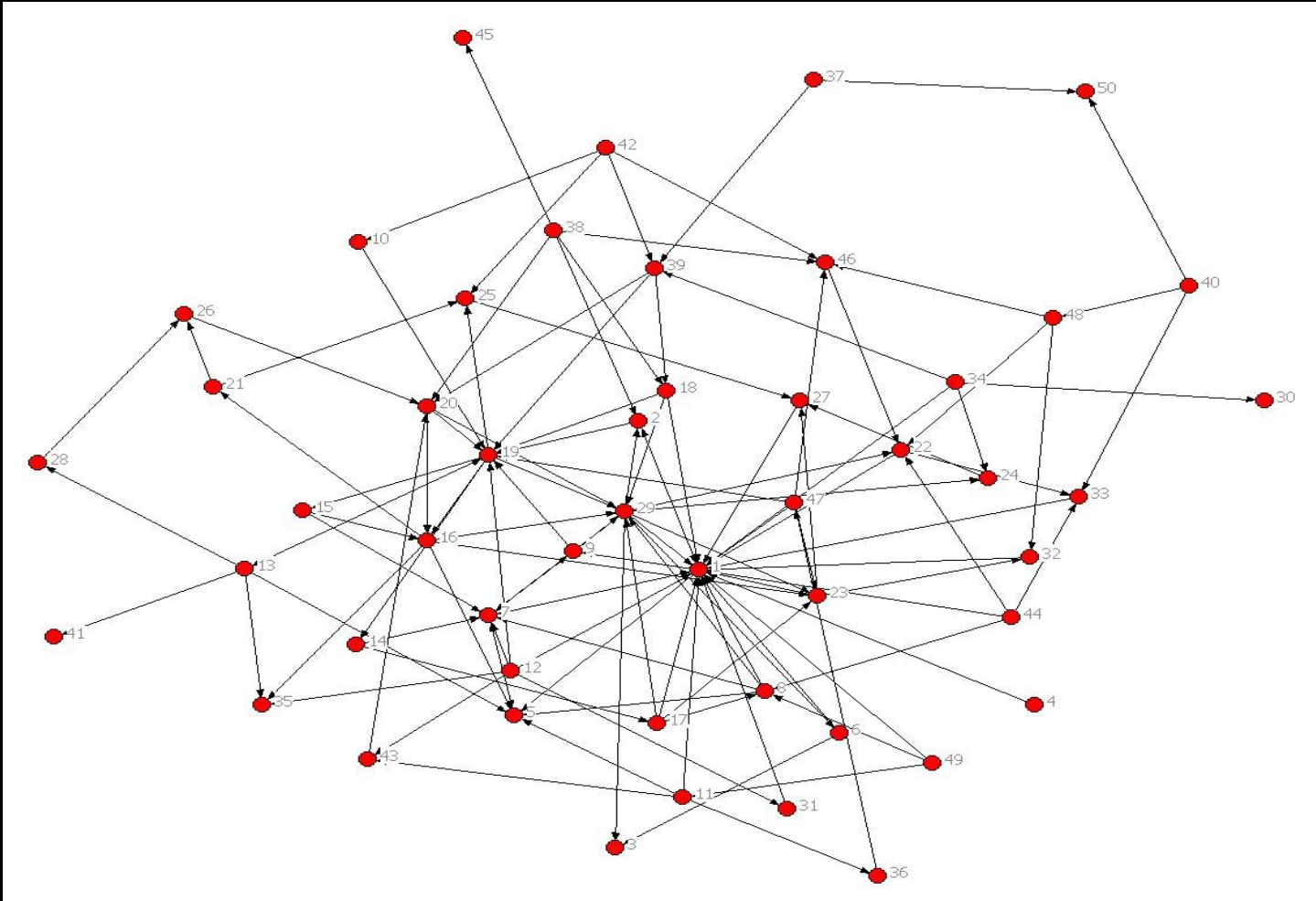
Small Towns

Community Development – eg. i-button

Social Connection - Communities that are resilient to change



Community Helping Network - Time 1



Community Helping Network – Time 2

Policy Links

National - Deputy PM's advisor

State – Public Health

- Landcare
- MAV/VLGA
- Uni Melbourne
- DSE, VCOSS
- School Curriculum Resource
- Rural Women's Network
- Commissioner Env Sustainability

Communities that are resilient to change



Climate Variability

Has direct and indirect impacts on health

Impacts those most vulnerable to change

Assisting people to adapt makes good sense – for health et al



Rosie Rowe

rosie.rowe@wdhs.net

