



Farmers take care of health Life on the land

Yasmin Paton

TWO days off the land is a big sacrifice for a farmer.

But 15 men and seven women from the greater Colac area spared their time for a good cause this week, attending a family health workshop in Rokewood.

The Sustainable Farm Families program addressed farm safety, medical issues, mental health and the impacts of drought.

Participants discussed practical ways to improve the lives of their families and the impact the improvements could deliver to their businesses.

"The program covers a range of areas including cardiovascular disease, cancer, diabetes, women and men's health, stress, depression, farm safety, nutrition and exercise," Hesse Rural Health Service's Kam Benton said.

Western District Health Service director of community service Sue Brumby said the popularity of the course, particularly with men, showed an increased awareness of health among farmers.

"I think the key message is that men and women are genuinely interested in their



Farmers attended the family health workshop in Rokewood.

health, well-being and safety," she said.

She said participants provided positive feedback about their experience.

"It's a bit of a leap of faith but everyone was really happy and really enjoying it," she said.

"We make sure it's in a context that's relevant to people."

All participants underwent a health assessment and will return

in 12 months to monitor their progress and refresh their knowledge.

The workshop was run by Western District Health Service in conjunction with the Department of Primary Industries and the Farming Federation Victoria.

For more information about future workshops, phone 5551 8508 or visit www.sustainablefarmfamilies.org.au.



Beeac's new welcome Lake revamp

UNIQUE logos will greet Beeac and Cressy residents when they drive into their towns with new entrance signs, reflective of the communities, being developed by Colac Otway Shire.

The signs are consistent with those installed at the entrances to Beech Forest, Forrest, Gellibrand, Barwon Downs and Birregurra.

"These signs are a way of branding individual townships throughout the shire," mayor Chris Smith said.

"Although they all share the same design and colours, they are each different and show features that put the individual towns on the map."

The Beeac Progress Association sponsored a competition, with more than 30 residents entering potential designs.



The new sign at Beeac.

Its new logo features a number of Beeac icons such as the heritage lamps, a windmill, Warrion Hill to the West, and a banded stilt feeding in Lake Beeac.

COLAC Otway Shire mayor Chris Smith has hinted at developing a family area along the Lake Colac foreshore.

Cr Smith said the foreshore had the potential for family recreational activities, similar to Warrnambool's popular Lake Pertobe.

He has asked Colac residents to submit ideas for possible developments between the yacht and rowing clubs.

"Lake Pertobe in Warrnambool has provided the Warrnambool and district community and tourists with the opportunity to experience safe family fun," Cr Smith said.

"We'd like to know whether this type of development, on a smaller scale, would be of benefit to our local residents."

Submissions must be handed in at either Colac Community Hub, Colac Otway Shire, Reynolds IGA, Tate's Milk Bar, North End store and Colac Area Health by June 6.

Dental care wait list blow-out

COLAC residents are waiting too long for public dental care according to the State Opposition.

Shadow Health Minister Helen Shardey said dental figures published for Colac Area Health in the latest *Your Hospitals* report revealed lengthy waits for treatment.

The figures show Colac's waiting times are 41 months for general dental care (up six months), while the average wait for denture care is 29 months (up six months).

"Just like our hospitals that are buckling under the pressure of increased demand, Victorian dental health services simply cannot cope and the

Brumby Government has no plans to reduce dental waiting times or reduce the number of dental emergencies, which account for more than half of all treatments," Ms Shardey said.

"Dental patients must be seen in a timely manner and leaving them languishing on waiting lists for months contributes to the need for more complex treatment."

Jason Frenkel, spokesman for Health Minister Daniel Andrews, said the government had this year provided \$138 million extra to cut waiting lists and improve access for children and the disadvantaged.



ACN 068 955 733 AFS Licence No 234581

LOANS

- Business
- Investment
- Rural

**We have funds available
See Paul or Gary today!**

119 Murray Street Colac ☎ 5231 9400
134 Manifold Street Camperdown ☎ 5593 1585
4/22 Pascoe Street Apollo Bay ☎ 5237 6176
19B Curdie Street Cobden ☎ 5595 1476
www.sewellsfinance.com.au

COMING UP AT COPACC

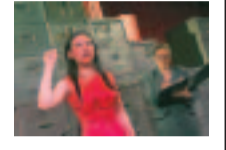
Australia Pro Arte's intimate style of chamber music wowed COPACC audiences last year and they're back on Friday, May 30, by popular demand to play works by Handel, Beethoven, Alfred Hill and Bach. Pro Arte Concerts are regularly broadcast by ABC FM. Cape Otway Lightstation is the sponsor of this 8pm concert entitled Moonshadow from the Range of Light concert series.



Australian National Piano Award winner Amir Farid, who is celebrated as a highly creative pianist of great intelligence, is playing at COPACC on Sunday, June 15 at 3pm. Amir will play Haydn's Sonata No. 49 in C# Minor, two Brahms rhapsodies, Beethoven's much-loved Waldstein, two pieces by Iranian Javad Ma'Roufi who is famed as the first composer to marry traditional Persian and Western classical music, plus Pokofiev's Tocata in D Minor. This exciting Civic Hall concert is proudly sponsored by Colac's Tempting Tucker.



Dark, humorous and melancholic, *Asylum* is a thought-provoking play about the paralysis of Australia's moral imagination. What are the consequences for asylum seekers if prejudice and naivety rule? *Asylum*, at COPACC on Wednesday, June 18, explores our confusion when we are called upon to consider the cruelties of life in a distant and mysterious country. Kit Lazaroo won the 2005 Wal Cherry Play of the Year Award for this work which is truly inspired. The play is sponsored by Cape Otway Lightstation.



All bookings through the COPACC Box Office on 5232 2077.

FIRE AND SMOKE

Residents need to be aware that burning off can only occur on Fridays and Saturdays between 10am and sunset in residential areas.

The only materials that can be burnt anywhere in the Shire are leaves, trees, branches or organic matter that is dry and doesn't cause a smoke nuisance when burnt.

Any queries should be directed to the Municipal Fire Prevention Officer on 5232 9490.

COUNCILLOR CONTACTS

Colac Otway Shire's Councillors are always interested to hear from their constituents. Anyone wishing to discuss issues can contact the Councillors who are only too happy to be of help.

Mayor Chris Smith	0419 351 255
Cr Tony Graham	0419 352 498
Cr Fran Lehmann	0419 597 503
Cr Peter Mercer	5236 6246
Cr Warren Riches	0400 062 967
Cr Carol Wilmlink	5237 6987
Cr Joe DiCecco	0418 522 197

Councillor information and additional contact details are available on the Colac Otway Shire website, www.colacotway.vic.gov.au.

CREATIVE USE OF SCHOOLS & COMMUNITY FACILITIES CONFERENCE

This one-day conference will explore the use of schools and community facilities for creative community outcomes. Presenters will describe local, national and international initiatives that have engaged communities, developed effective partnerships and resulted in creative community activity. You will be informed and inspired about possibilities.

The conference will be held on Friday June 20 at COPACC from 9.30am to 4.30pm. Conference fee is \$44/\$11 and includes morning and afternoon tea, and lunch.

Registrations enquiries can be made through Irene Pagram on 5232 9400 or email irene.pagram@colacotway.vic.gov.au. Places are limited, please register by Friday June 13 to ensure your place.

DROUGHT RELIEF RATES REBATES

Farmers are reminded to claim the rates rebate for 2007/08 immediately.

The Department of Primary Industries has advised it will not reimburse Council for claims for rates payments made after June 2 2008.

Farmers wishing to apply for the rebate are required to have:-

- paid the rates
- lodged a Rates Rebate application with Council
- provided a recent ECRP Income statement to Council in support of the Rates Rebate application

Contact Paul Carmichael on 5232 9461 if you have further queries.

FINAL RATES INSTALMENT DUE

People paying their rates by instalments are reminded their final payment is due by May 31 2008. As this is a Saturday, payments can be made by close of business Monday June 2.

Payments can be made at Colac Otway Shire Customer Service Centres in Colac and Apollo Bay, the Commonwealth Bank, post offices or at www.postbillpay.com.au.

If you are experiencing financial difficulty please contact our Rates Department on 5232 9400 to discuss available options.

PLANNING SCHEME AMENDMENT C27

The Minister for Planning has approved Part 1 of the final stage of the Heritage Overlay Amendment (C27).

This Planning Scheme Amendment provides protection of heritage places and areas that are significant to the cultural history of Colac Otway and is a direct result of recommendations arising from the Colac Otway Heritage Study 2003.

Part 1 of the amendment, which came into effect on May 22 2008, applies the Heritage Overlay to over 241 individual sites within the Shire, and planning permits are now required for demolition of buildings or construction of new buildings and works on those properties. Part 2 of the amendment will apply the Heritage Overlay to 12 precinct based heritage areas and introduce detailed guidelines to assist in the assessment of planning permit applications for all properties affected by a Heritage Overlay. This part of the amendment is still waiting on Ministerial approval.

PLANNING SCHEME AMENDMENT C55 (PLANNING SCHEME REVIEW) – INDEPENDENT PANEL HEARING

An independent Panel is soon to hear submissions to Amendment C55 which implements the Colac Otway Shire Planning Scheme Review and a number of strategic studies, including the Colac and Apollo Bay Structure Plans and Rural Land Strategy.

The Panel will commence hearings on June 16 in Colac, and will move to Apollo Bay for the week commencing June 23. Submitters to the amendment that have indicated an interest in presenting to the Panel have been notified of the hearing and of particular times to attend, however the hearings are open to the public and any interested persons are welcome to attend as observers.

For details of the hearing, please contact the Strategic Planning Department on 5232 9513.

**Tracey Slatter
Chief Executive Officer**

www.colacotway.vic.gov.au