

*Award Winning*

# MILK BAR



Australia's  
First Bank

Regional Banking

Season to season.  
Generation  
to generation.

Westpac. Helping regional  
Australian business since 1817.



Westpac Banking Corporation ABN 33 007 457 141. Also trading as Challenge Bank and Bank of Melbourne.

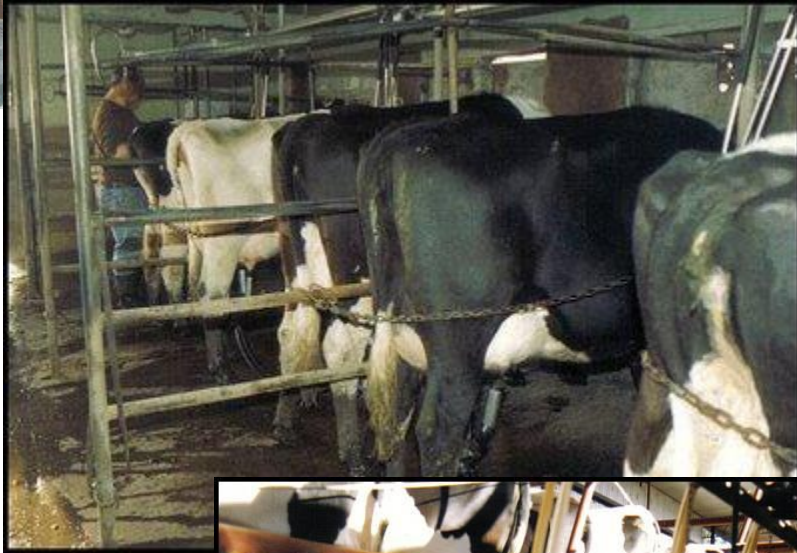
network

PHONE 1300 791 989

# The Farming Dream

- Earn an acceptable standard of living for the family today
- Be a full time farmer
- Invest in the future to maintain that standard of living into the future
- Put aside reserves for the difficult seasons
- Pass on a working business to the next generation

















Woolworths  
Fresh  
BRUSSELS SPROUTS  
500 g  
28 JUL 07  
Barcode

Reduced to  
**\$ FREE**  
FOR QUICK SALE  
Single item only. No further discounting.

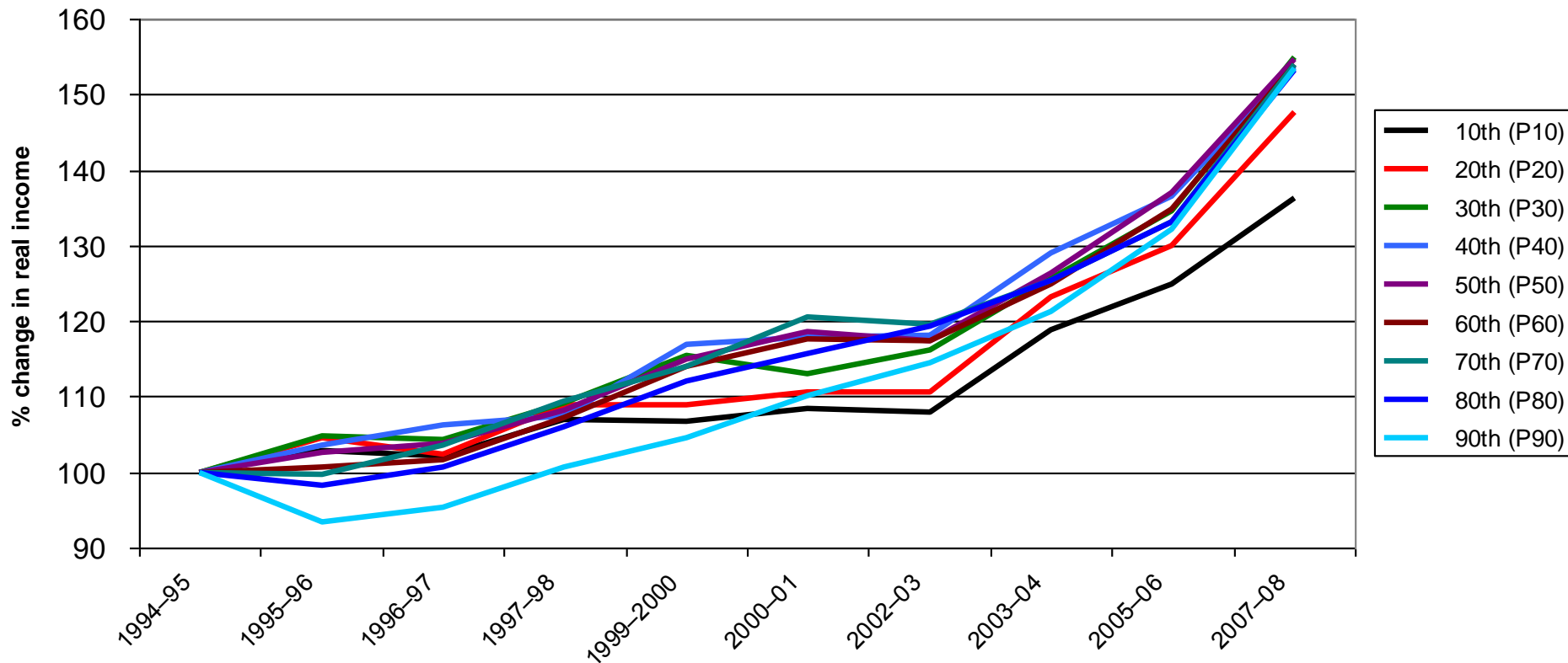


*IT'S NOT EASY KEEPING UP  
WITH THE JONES*

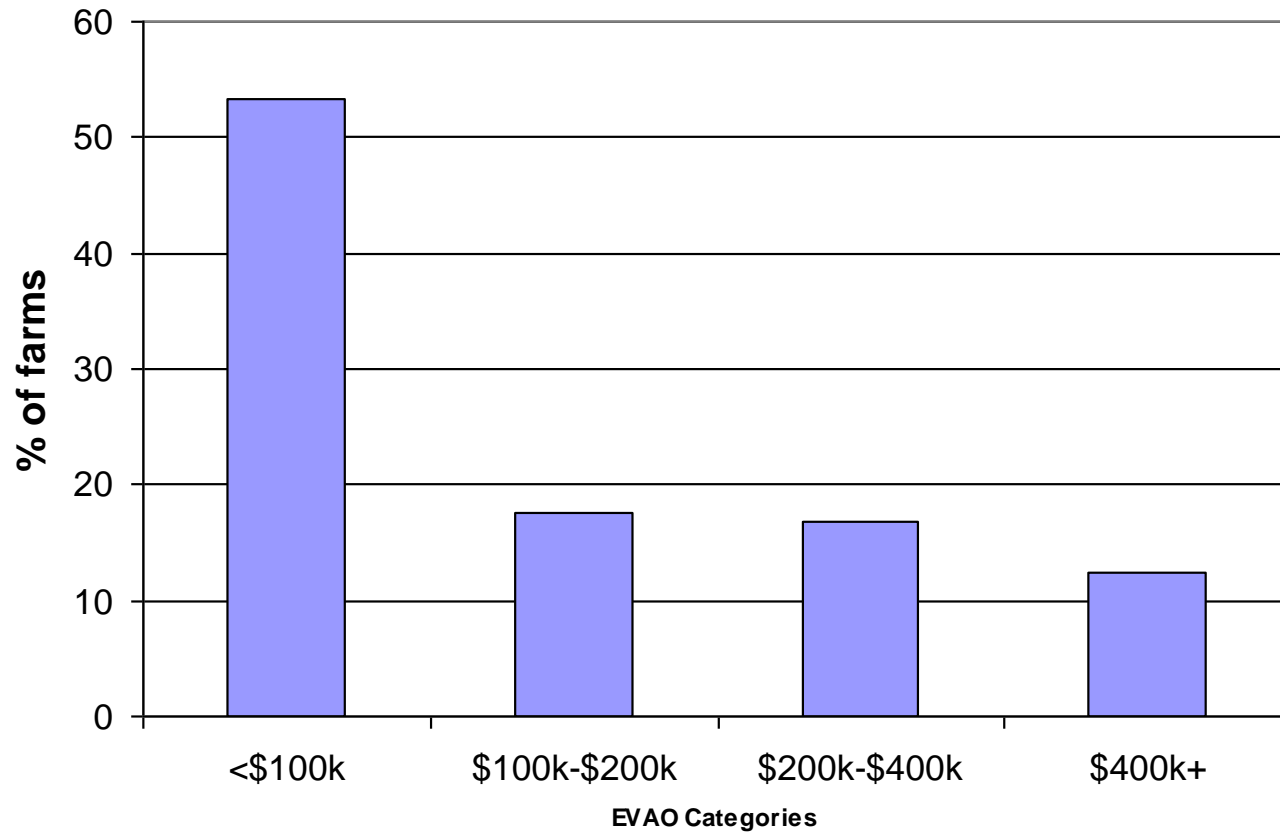


# % change in real household income

## Australia: 1994-2008



# Victorian farm scale distribution 2006



















# ENVIRONMENTAL HERITAGE PROPERTIES

[HOME](#)[ABOUT US](#)[OUR PROPERTIES](#)[CONTACT US](#)

Environmental Heritage Properties have natural significance. Offering both a home to a distinctive diversity of native species, they also provide a linkage between larger natural assets, including National Parks, Nature Conservation Reserves and Flora and Fauna Reserves.

Environmental Heritage Properties have been protected with a conservation covenant, and come with an ecologically based management plan, which ensures that future management will be conservation focused.

Environmental Heritage Properties are working toward the long-term vision of reintegrating all of Australia's natural assets through a network of living corridors or 'biolinks.' Check out the vision at our visionary website 'BiolinkingAustralia.com.'

## KORONG RIDGE CONSERVATION RESERVE



A Few of our properties are shown below:

[VIEW ALL PROPERTIES »](#)

### IMPLEXA

[VIEW THIS PROPERTY »](#)

This southerly facing property of 320 acres, displays a beautiful array of native grasses, two seasonal creeks

### DANTHONIA

[VIEW THIS PROPERTY »](#)

This east facing property has some significant aristida grasslands, very large old grey box woodlands, and large

### PYCNANTHA

[VIEW THIS PROPERTY »](#)

Nestled among granitic hills to the North and West, this property has a diversity of native species species

### ARISTIDA

[VIEW THIS PROPERTY »](#)

This is the property description. It will be added soon.



















# Farmers by age

## Tara Bulga 1981-2006

